

# The Ryanne

1232 NORMANDY RUE  
CLEARCREEK TOWNSHIP, OH 45458  
SORAYA FARMS - LOT 216



4 BEDROOMS



3.5 BATHS



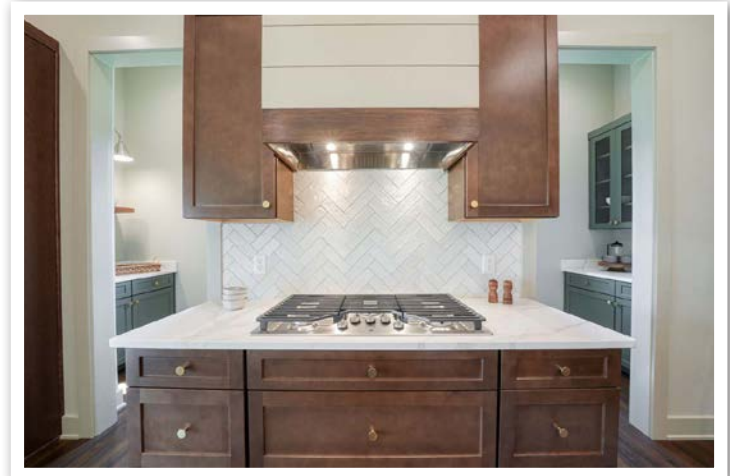
3 CAR GARAGE



3,497 SQ. FT.

## MOVE-IN READY

This open-concept ranch features 11' ceilings in the great room, kitchen, and foyer, a gourmet kitchen with quartz counters, stainless appliances, and a large walk-in pantry, plus a floor-to-ceiling tiled linear electric fireplace. The first-floor primary suite includes a walk-in closet and tiled shower. The finished lower level offers two additional bedrooms and a full bath. Enjoy covered front and back patios and community amenities including a heated pool, clubhouse, fitness center, walking trails, and private fishing ponds.



## CONTACT US TODAY!

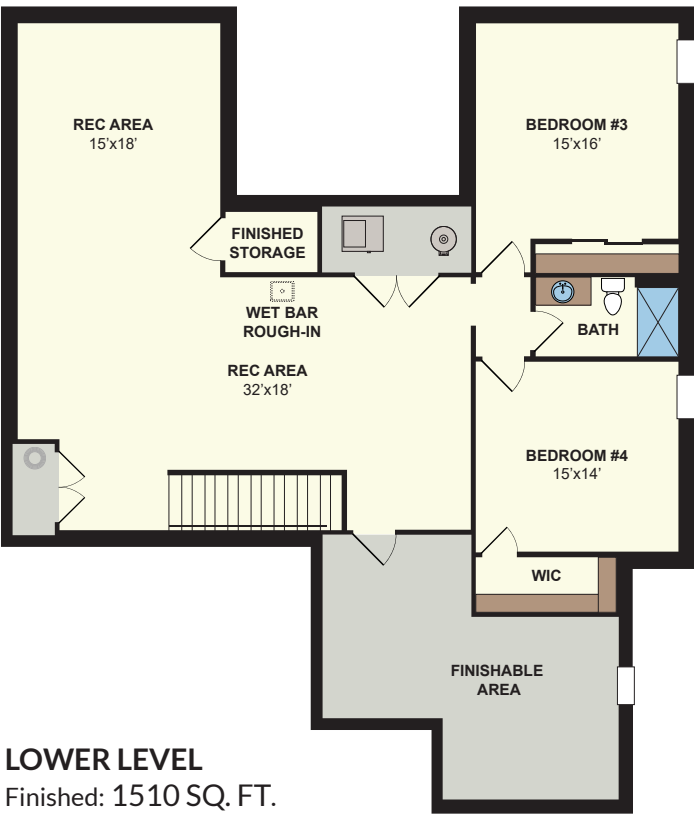
PHONE : (937) 438-3667

EMAIL : sales@designhomesco.com

WEB : www.designhomesco.com

# The Ryanne

FIRST FLOOR  
1,987 SQ. FT.



The information contained herein is not guaranteed. Although obtained from reliable sources, it is subject to errors, omission, prior sale, withdrawal from the market or change in price without notice.



**CONTACT US TODAY!**

PHONE : (937) 438-3667  
EMAIL : sales@designhomesco.com  
WEB : www.designhomesco.com