



The Oliver

9417 ROCHELLE LANE
CLEARCREEK TOWNSHIP, OH 45458
SORAYA FARMS - LOT 234



5 BEDROOMS



4.5 BATHS



3 CAR GARAGE



3,915 SQ. FT.

COMING SOON!

New construction 2-story home with a finished lower level and 3-car garage. The Oliver offers 5 total bedrooms, including a first-floor ensuite and a lower-level bedroom. The main level features a 2-story great room with a tiled gas fireplace and a kitchen with stainless steel appliances, pantry, and microwave drawer. Upstairs offers laundry and a primary suite with a soaking tub, tile shower, and walk-in closet. Community amenities include a clubhouse, walking trails, private fishing ponds, and a heated pool.

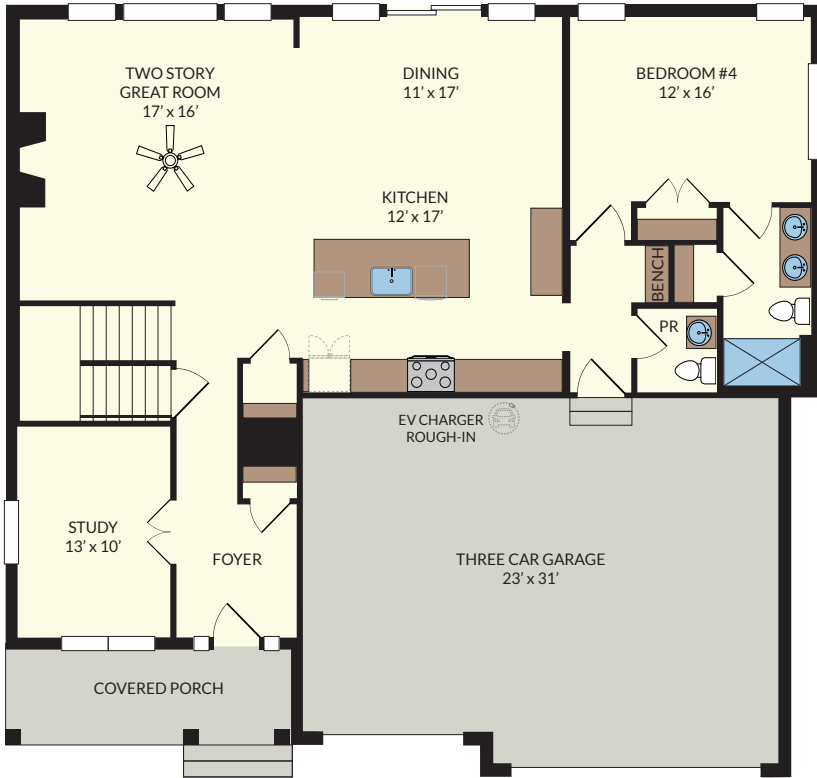


CONTACT US TODAY!

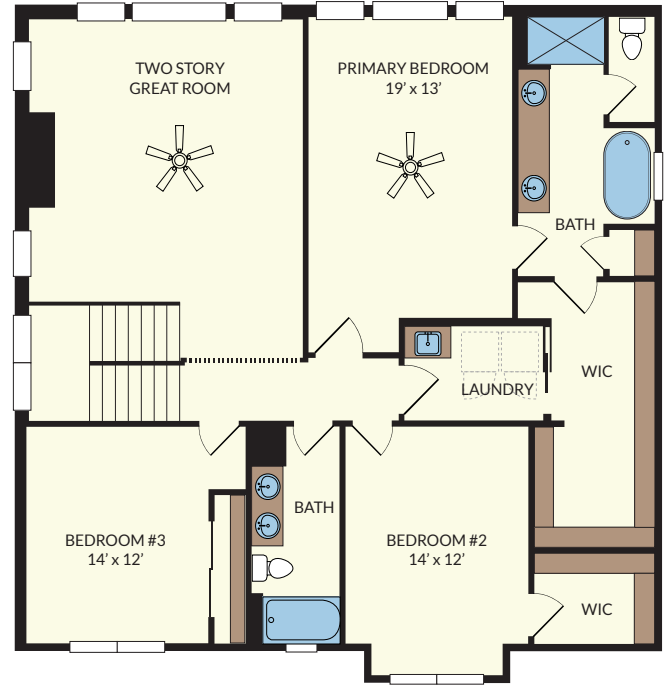
PHONE : (937) 438-3667
EMAIL : sales@designhomesco.com
WEB : www.designhomesco.com

The Oliver

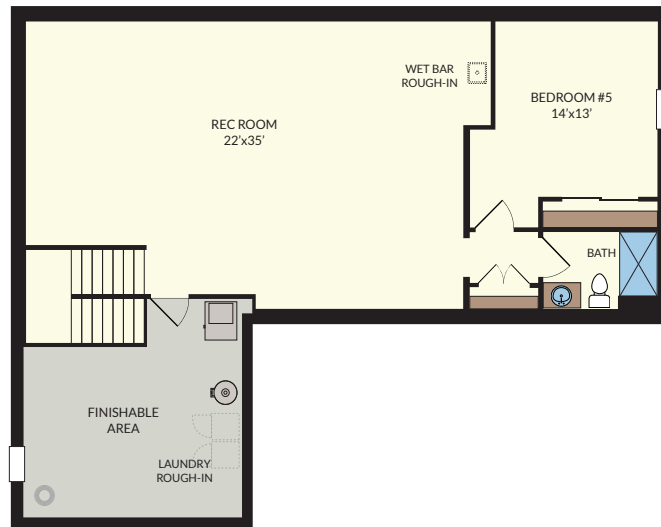
FIRST FLOOR 1,511 SQ. FT.



SECOND FLOOR 1,246 SQ. FT.



LOWER LEVEL Finished: 1,158 SQ. FT. Finishable: 264 SQ. FT.



The information contained herein is not guaranteed. Although obtained from reliable sources, it is subject to errors, omission, prior sale, withdrawal from the market or change in price without notice.

CONTACT US TODAY!

PHONE : (937) 438-3667

EMAIL : sales@designhomesco.com

WEB : www.designhomesco.com