

# The Quinn

1214 NORMANDY RUE  
CLEARCREEK TOWNSHIP, OH 45458  
SORAYA FARMS - LOT 219



4 BEDROOMS



3.5 BATHS



3 CAR GARAGE



3,187 SQ. FT.

MOVE-IN READY

This open-concept ranch features 11' ceilings, a gourmet kitchen with quartz counters, stainless appliances, and a tile backsplash. The great room offers a 56" linear electric fireplace with floor-to-ceiling tile. The primary suite includes a walk-in closet and zero-entry tiled shower. The finished lower level adds a fourth bedroom, full bath, 1,000+ sq. ft. rec room, and finishable storage. Enjoy covered outdoor spaces and community amenities like a heated pool, clubhouse, fitness center, walking trails, and private fishing ponds.



**CONTACT US TODAY!**

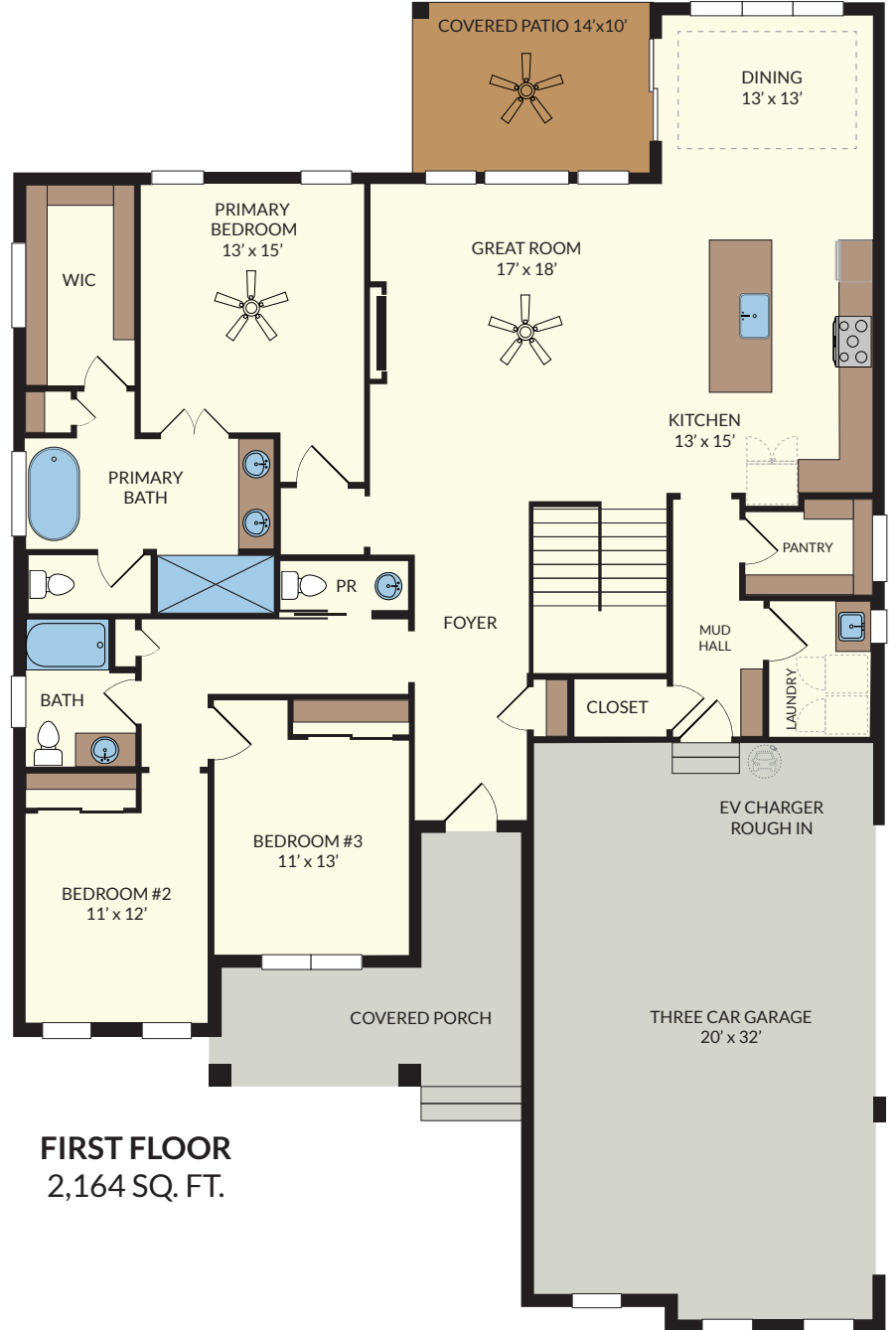
PHONE : (937) 438-3667  
EMAIL : sales@designhomesco.com  
WEB : www.designhomesco.com



**LOWER LEVEL**

Finished: 1,023 SQ. FT.

Finishable: 1,052 SQ. FT.



**FIRST FLOOR**

2,164 SQ. FT.

*The information contained herein is not guaranteed. Although obtained from reliable sources, it is subject to errors, omission, prior sale, withdrawal from the market or change in price without notice.*