

# The Magnolia

2436 SHERBOURNE WAY  
BEAVERCREEK TOWNSHIP, OH 45385

*COUNTRY CLUB OF THE NORTH - LOT 214*



3 BEDROOMS



2.5 BATHS



3 CAR GARAGE



2,342 SQ. FT.

## MOVE-IN READY

This open concept, split floorplan ranch offers stylish living in the desirable Beavercreek School District. The gourmet kitchen includes stainless steel appliances and a walk-in pantry, flowing seamlessly into a great room with soaring 11' ceilings. The luxury owner's suite features a tiled shower, freestanding tub, and elegant finishes. A large mud hall with a custom bench adds function, while a gas fireplace with tile adds warmth. Enjoy a 3-car garage with car charger rough-in and a beautiful pond view.



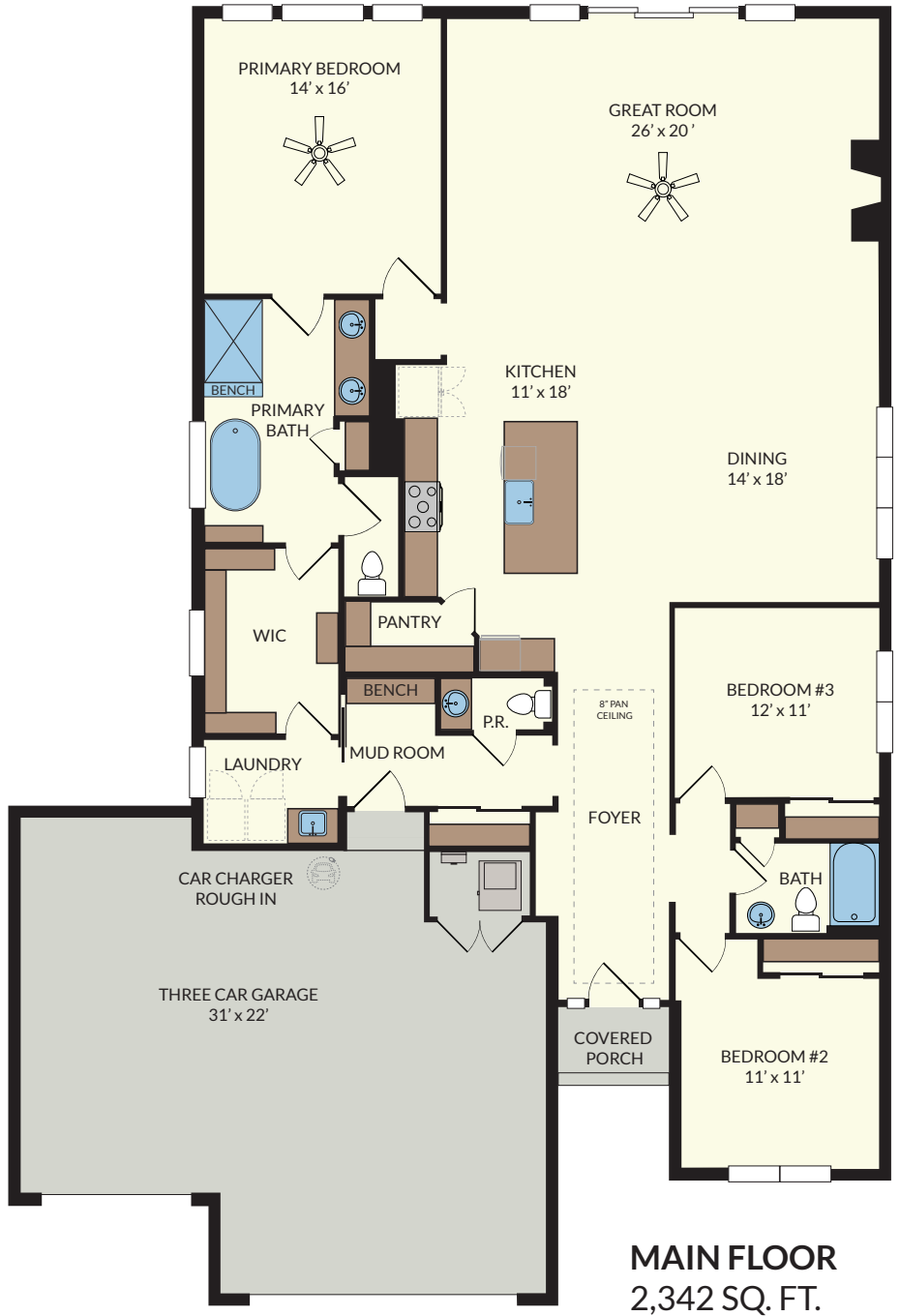
## CONTACT US TODAY!

PHONE : (937) 438-3667

EMAIL : [sales@designhomesco.com](mailto:sales@designhomesco.com)

WEB : [www.designhomesco.com](http://www.designhomesco.com)

# The Magnolia



The information contained herein is not guaranteed. Although obtained from reliable sources, it is subject to errors, omission, prior sale, withdrawal from the market or change in price without notice.



**CONTACT US TODAY!**

PHONE : (937) 438-3667

EMAIL : sales@designhomesco.com

WEB : www.designhomesco.com