

THE RYANNE

w/ BASEMENT

DH DESIGN HOMESSM
LUXURY HOME BUILDER

2 BEDROOM | 2 BATHROOMS | 2 CAR GARAGE | 2,045 SQ.FT.



ELEVATION A



ELEVATION B



ELEVATION C

- Open concept ranch offering an abundance of natural light in the great room and dining area
- Kitchen w/ island for seating, large walk-through pantry, optional desk
- Dedicated dining room w/ access to back patio or deck

- Luxury primary suite and bath featuring split vanities and large walk-in closet
- Mud room off the garage
- Covered front porch
- Lower level may be finished to include 2 additional bedrooms, full bath and wet bar

Ask us about additional options available!

DH DESIGN HOMESSM
LUXURY HOME BUILDER

CONTACT US TODAY!

PHONE : (937) 438-3667

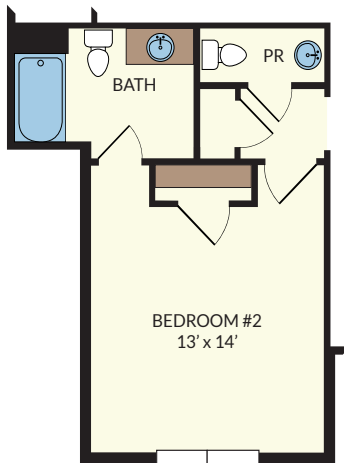
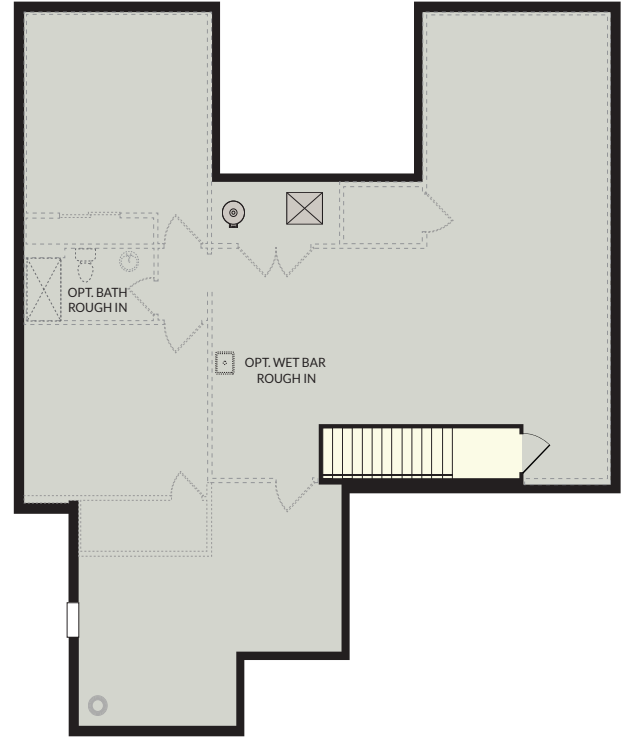
EMAIL : sales@designhomesco.com

WEB : www.designhomesco.com

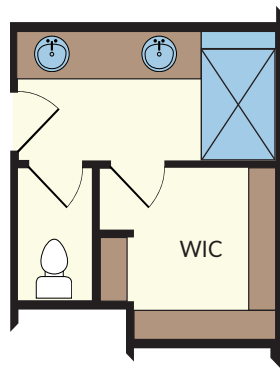


THE RYANNE

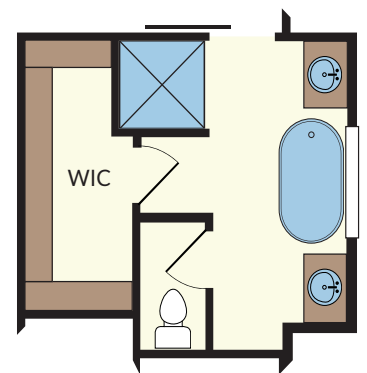
- FLOORPLAN - Basement



OPTIONAL
POWDER ROOM



OPTIONAL
PRIMARY BATH #1



OPTIONAL
PRIMARY BATH #2



The information contained herein is not guaranteed. Although obtained from reliable sources, it is subject to errors, omission, prior sale, withdrawal from the market or change in price without notice.