

THE ONASSIS



1894 HORSESHOE BEND | WASHINGTON TWP, OH 45458 | LOT 309

COMING SOON!



COMING SOON



COMING SOON



COMING SOON

- Dextlue gourmet kitchen w/ walk-through pantry, Thermador® appliances, double islands
- 2-Story great room features a pan ceiling details and a floor-to-ceiling tiled gas fireplace
- Primary suite features a cathedral ceiling, zero-entry walk-in tile shower, freestanding soaker tub and a massive walk-in closet w/ island
- Laundry room includes a dog wash station
- Finished lower level includes a full wet bar, dedicated fitness room, LVP Flooring and over 1,000 Sq.Ft of additional storage space
- 3-car side-load entry garage w/ EV Charger rough in
- Designer lighting fixtures throughout



5 BEDROOMS



4.5 BATHS



3 CAR GARAGE



5,205 SQ. FT.



CONTACT US TODAY!

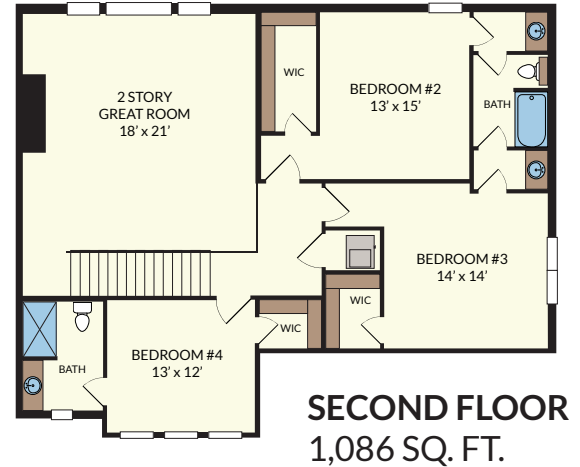
PHONE : (937) 438-3667

EMAIL : sales@designhomesco.com

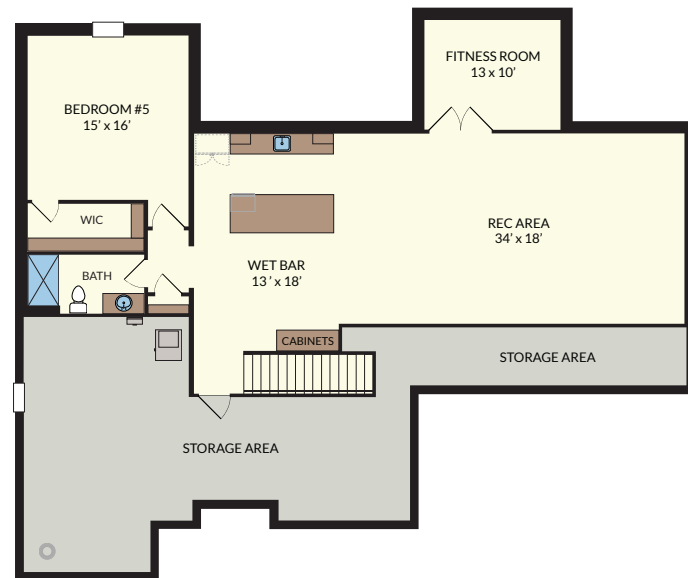
WEB : www.designhomesco.com



THE ONASSIS



LOWER LEVEL
Finished: 1,597 SQ. FT.
Finishable: 811 SQ. FT.



The information contained herein is not guaranteed. Although obtained from reliable sources, it is subject to errors, omission, prior sale, withdrawal from the market or change in price without notice.



CONTACT US TODAY!

PHONE : (937) 438-3667
EMAIL : sales@designhomesco.com
WEB : www.designhomesco.com

