

THE MARLO

w/ BASEMENT

DH DESIGN HOMES^{INC.}
LUXURY HOME BUILDER

2 BEDROOM | 2.5 BATHROOMS | 2 CAR GARAGE | 2,187 SQ.FT.



UPGRADED "B" ELEVATION SHOWN



ELEVATION A



ELEVATION B



ELEVATION C

- Open concept ranch features a great room w/ fireplace focal point
- Kitchen w/ island for seating, large walk-in pantry
- Open dining area w/ access to covered back patio or deck
- Second bedroom features a walk-in closet and private bath

- Luxury owner's suite and bath featuring double vanities, large walk-in closet connected to the laundry room
- Mud room & powder room off the garage
- Covered front entry
- Lower level may be finished to include a third bedroom, full bath and wet bar

Ask us about additional options available!

DH DESIGN HOMES^{INC.}
LUXURY HOME BUILDER

CONTACT US TODAY!

PHONE : (937) 438-3667

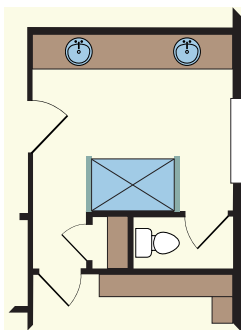
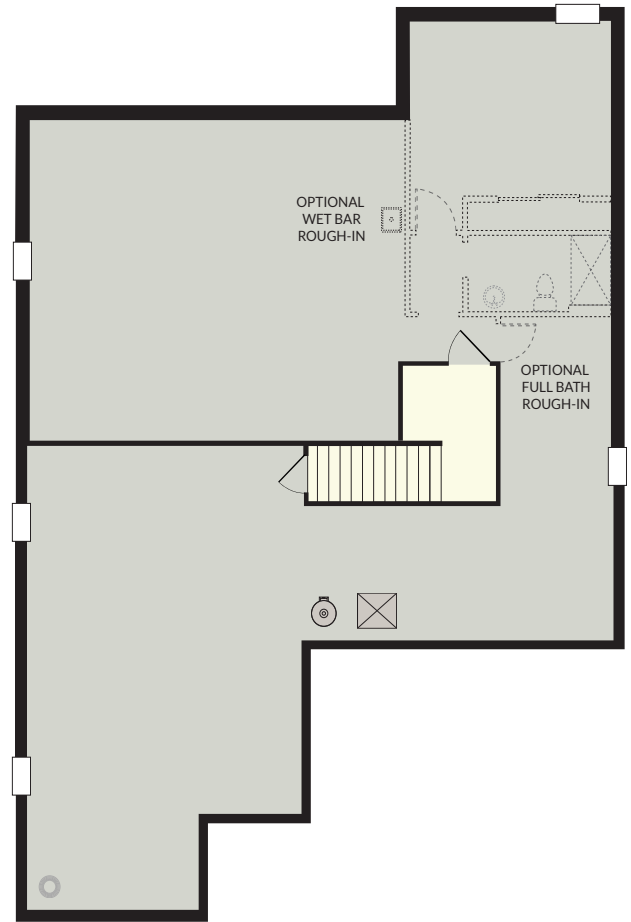
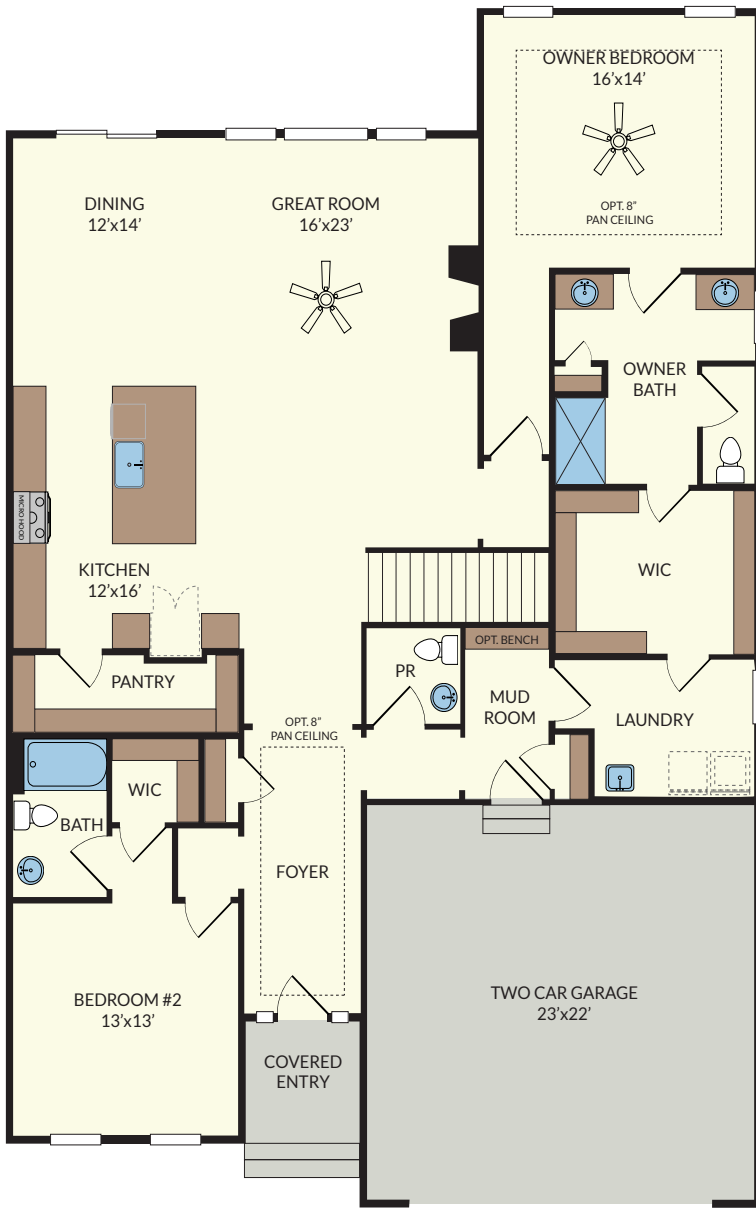
EMAIL : sales@designhomesco.com

WEB : www.designhomesco.com

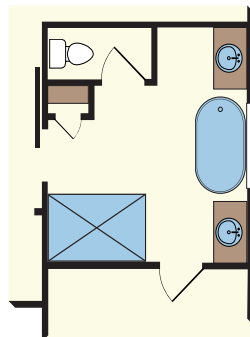


THE MARLO

- FLOORPLAN - Basement



OPTIONAL
OWNER BATH 1



OPTIONAL
OWNER BATH 2



OPTIONAL
DECK / PATIO



The information contained herein is not guaranteed. Although obtained from reliable sources, it is subject to errors, omission, prior sale, withdrawal from the market or change in price without notice.