

THE WILLOW

w/ BASEMENT

DH DESIGN HOMESSM
LUXURY HOME BUILDER

3 BEDROOM | 2.5 BATHROOMS | 2 CAR GARAGE | 2,156 SQ.FT.



UPGRADED "B" ELEVATION SHOWN



ELEVATION A



ELEVATION B



ELEVATION C

- Entrance leads to a great room with 10' ceilings, fireplace with an abundance of natural light
- Open concept kitchen with island seating and large walk-in pantry
- Luxury owner's suite and bath featuring double vanities and large walk-in closet

- Two additional bedrooms on the main level, with an optional study
- Mud hall and laundry room off the garage
- Front and rear covered patios
- Lower level may be finished to include a fourth bedroom, full bath and wet bar

Ask us about additional options available!

DH DESIGN HOMESSM
LUXURY HOME BUILDER

CONTACT US TODAY!

PHONE : (937) 438-3667

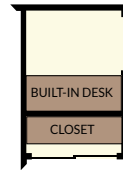
EMAIL : sales@designhomesco.com

WEB : www.designhomesco.com

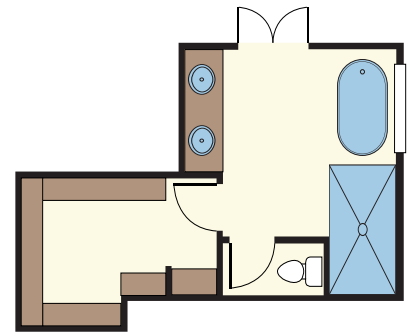


THE WILLOW

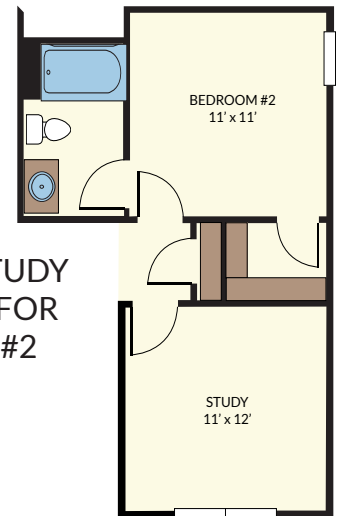
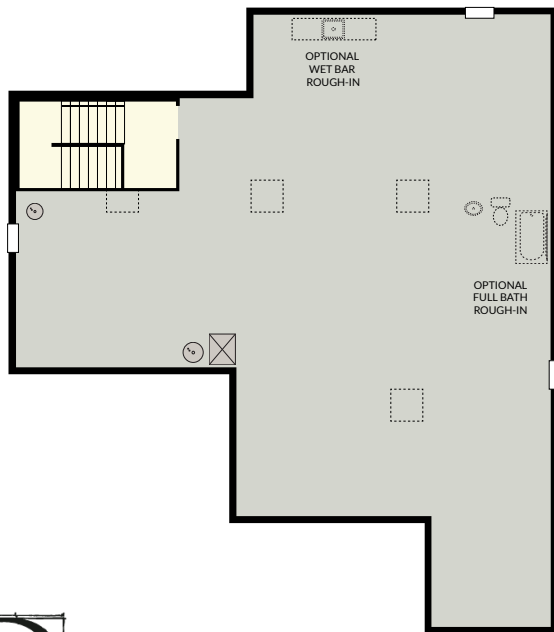
- FLOORPLAN - Basement



OPTIONAL POCKET
OFFICE IN LIEU OF
POWDER ROOM



OPTIONAL DELUXE
OWNER'S BATH
w/ TILE SHOWER &
FREESTANDING TUB



OPTIONAL STUDY
w/ EN SUITE FOR
BEDROOM #2

