

THE SIERRA

DH DESIGN HOMESSM
LUXURY HOME BUILDER

4 BEDROOM | 2.5 BATHROOMS | 2 CAR GARAGE | 3112 SQ.FT.



UPGRADED "C" ELEVATION SHOWN



ELEVATION A



ELEVATION B



ELEVATION C

- Spacious entrance leading to a large great room with fireplace
- Unique kitchen with eating island and large breakfast nook that leads to a covered rear porch
- First floor owner's suite with deluxe bathroom and walk-in shower

- Three additional bedrooms with walk-in closets
- Upstairs gameroom and shared bathroom
- Mud hall and laundry room off the two car garage
- Unfinished basement included in base price

Ask us about additional options available!

DH DESIGN HOMESSM
LUXURY HOME BUILDER

CONTACT US TODAY!

PHONE : (937) 438-3667

EMAIL : sales@designhomesco.com

WEB : www.designhomesco.com



THE SIERRA

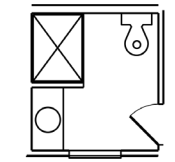
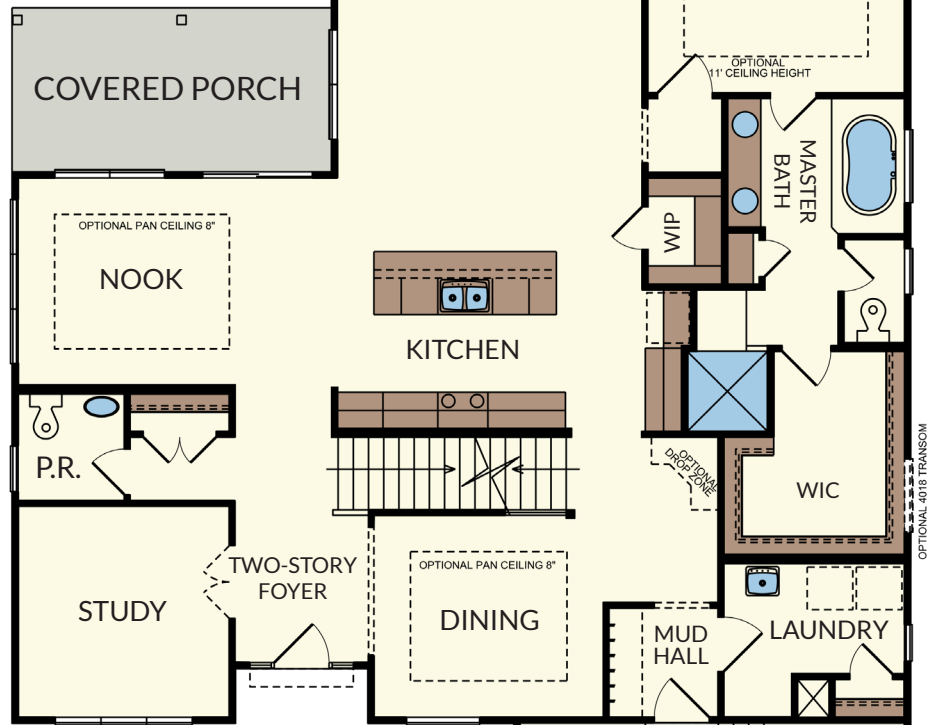
- STANDARD FLOORPLAN -
w/ Basement

- Great Room: 16' x 20'
- Nook: 17' x 11'
- Kitchen: 18' x 13'
- Study: 11' x 11'
- Dining: 12' x 11'
- Master Bedroom: 14' x 16'
- Master Bathroom: 9' x 13'
- Bedroom 2: 15' x 11'
- Bedroom 3 & 4: 13' x 12'
- Gameoom: 10' x 14'
- Laundry: 10' x 8'
- Covered Rear Porch: 17' x 9'
- Two Car Garage: 21' x 24'

OPTIONS AVAILABLE:

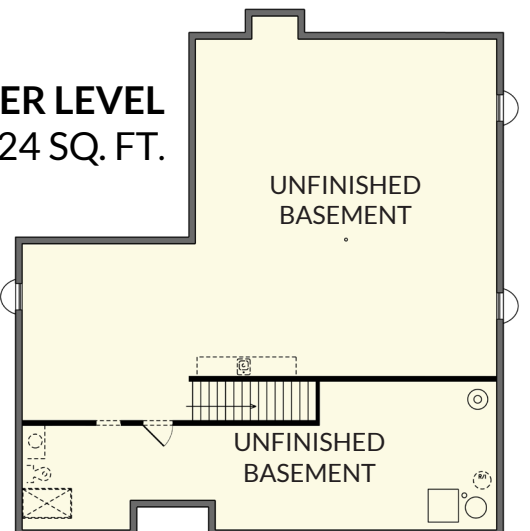
- 11' Ceilings (in great room & master bedroom)
- Gourmet kitchen
- Bench seat in mud hall
- Open railing staris
- 3 Car side entry garage

FIRST FLOOR 2,122 SQ. FT.



SECOND FLOOR 990 SQ. FT.

LOWER LEVEL 2,124 SQ. FT.



The information contained herein is not guaranteed. Although obtained from reliable sources, it is subject to errors, omission, prior sale, withdrawal from the market or change in price without notice.