

THE SCARLETT

w/ BASEMENT

DH DESIGN HOMESSM
LUXURY HOME BUILDER

3 BEDROOM | 2 BATHROOMS | 2 CAR GARAGE | 1,838 SQ.FT.



UPGRADED "B" ELEVATION SHOWN



ELEVATION A



ELEVATION B



ELEVATION C

- Open concept ranch
- Great room w/ fireplace focal point
- Kitchen w/ island for seating, large walk-in pantry
- Separate dining area w/ access to optional back patio or deck (covered patio or deck required on elevation C)

- Luxury primary suite features double vanities and large walk-in closet
- Mud room off the garage
- Covered front porch
- Lower level may be finished to include a fourth bedroom, full bath and wet bar

Ask us about additional options available!

DH DESIGN HOMESSM
LUXURY HOME BUILDER

CONTACT US TODAY!

PHONE : (937) 438-3667

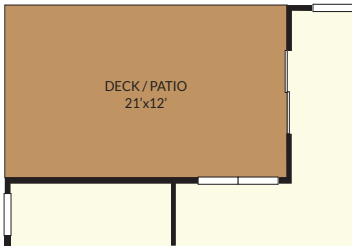
EMAIL : sales@designhomesco.com

WEB : www.designhomesco.com



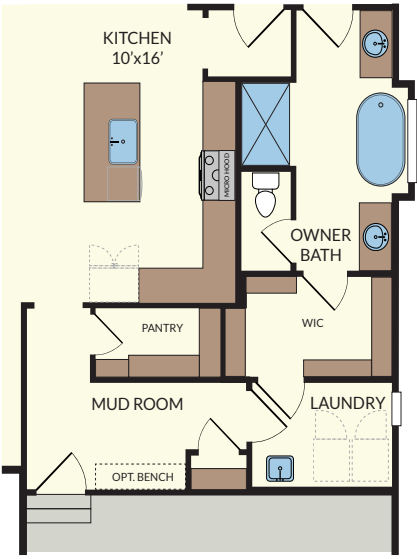
THE SCARLETT

- FLOORPLAN - Basement

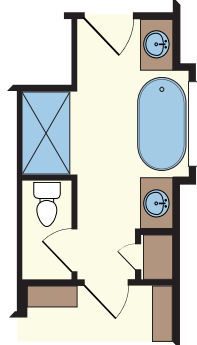


OPTIONAL COVERED DECK / PATIO ON ELEVATIONS A&B

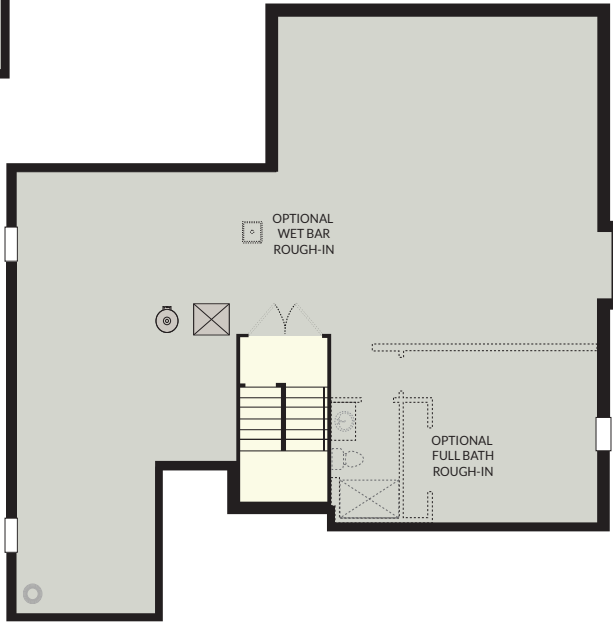
*REQUIRED WITH ELEVATION C



OPTIONAL ENTRANCE TO LAUNDRY FROM PRIMARY SUITE



OPTIONAL PRIMARY BATH



The information contained herein is not guaranteed. Although obtained from reliable sources, it is subject to errors, omission, prior sale, withdrawal from the market or change in price without notice.