

4 BEDROOM | 3.5 BATHROOMS | 3 CAR GARAGE | 5,528 SQ.FT.



- Grand foyer w/ triple pan ceiling & designer light fixtures
- Deluxe gourmet kitchen w/ walk-in pantry & professional styled stainless steel appliances
- Great room & main living areas feature soaring 11' ceilings
- Dual black Next Dimension windows by Windsor®
- Linear fireplace w/floor-to-ceiling stone
- Luxury primary suite features a zero-entry shower, split vanities, freestanding tub & huge walk-in closet that connects to the laundry and mudroom
- Finished lower level w/ 4th bedroom, wet bar, full bath & media room
- Large covered patio w/ tongue & groove cathedral ceiling

Ask us about additional options available!

CONTACT US TODAY!

PHONE : (937) 438-3667

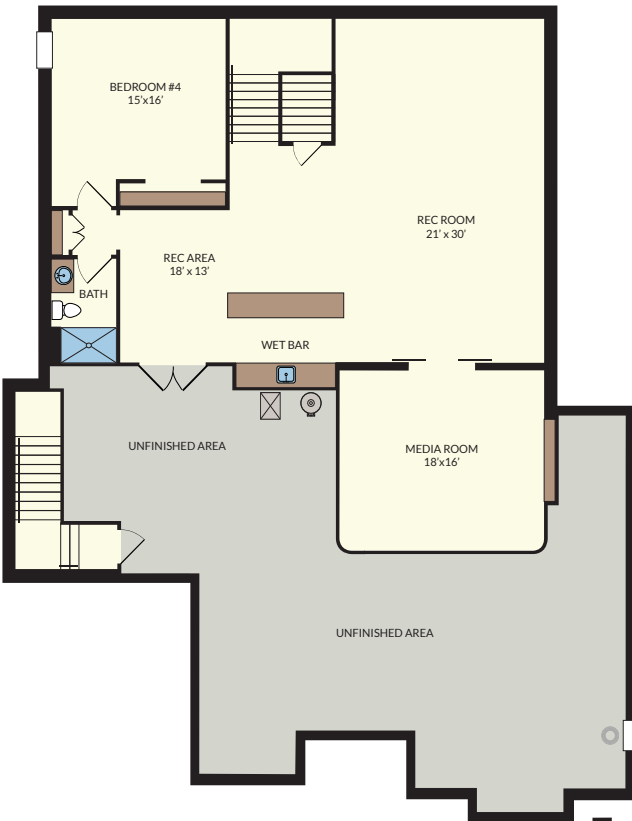
EMAIL : sales@designhomesco.com

WEB : www.designhomesco.com



THE NAPA

- FLOORPLAN - Basement



LOWER LEVEL
Finished: 1,816 SQ. FT.
Finishable: 1,237 SQ. FT.

FIRST FLOOR
3,172 SQ. FT.



The information contained herein is not guaranteed. Although obtained from reliable sources, it is subject to errors, omission, prior sale, withdrawal from the market or change in price without notice.