

# THE MANHATTAN



9351 ROCHELLE LANE | CLEARCREEK TOWNSHIP, OH 45458 | LOT 182



- Open concept ranch home, great room opens up to a covered rear patio
- Kitchen w/ quartz counters & stainless steel appliances
- 11' ceilings in the great room & foyer
- Modern, lineal electric fireplace in the great room
- Dedicated study along with three additional bedrooms
- Primary suite w/ walk-in closet, tiled shower walls, double bowl vanity and large freestanding tub
- Finishable lower level includes a wet bar rough-in, full bath rough-in and space for a fourth bedroom
- Community w/ amenities include: Clubhouse, pool, walking trails, fishing ponds & exercise room



3 BEDROOMS



2.5 BATHS



3 CAR GARAGE



2,155 SQ. FT.



## CONTACT US TODAY!

PHONE : (937) 438-3667

EMAIL : sales@designhomesco.com

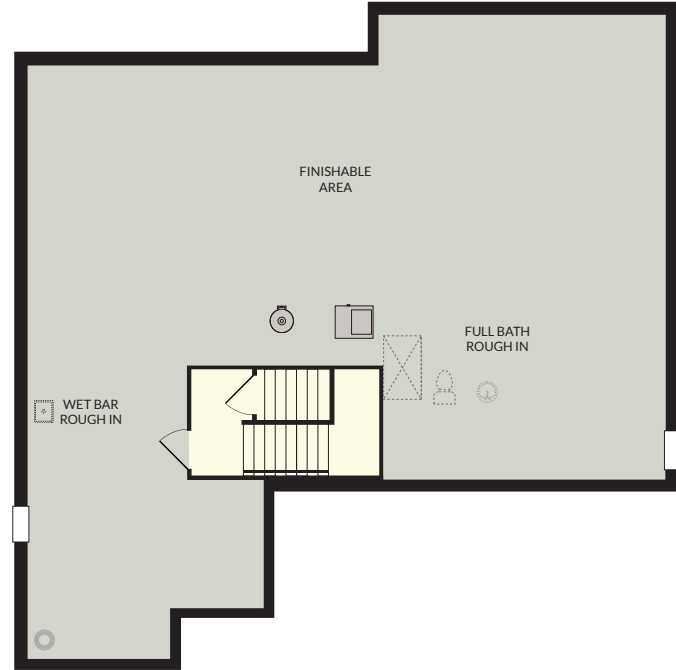
WEB : www.designhomesco.com



# THE MANHATTAN



**FIRST FLOOR**  
2,025 SQ. FT.



**LOWER LEVEL**  
Finished: 130 SQ. FT.  
Finishable: 1,822 SQ. FT.

*The information contained herein is not guaranteed. Although obtained from reliable sources, it is subject to errors, omission, prior sale, withdrawal from the market or change in price without notice.*



**CONTACT US TODAY!**

PHONE : (937) 438-3667  
EMAIL : sales@designhomesco.com  
WEB : www.designhomesco.com

