

# THE CHARLOTTE

w/ BASEMENT



3 BEDROOM | 2 BATHROOMS | 3 CAR TANDEM GARAGE | 1,983 SQ.FT.



UPGRADED "B" ELEVATION SHOWN



ELEVATION A



ELEVATION B



ELEVATION C

- Great room w/ fireplace focal point
- Kitchen w/ large island for seating, walk-in pantry
- Open dining area, attached to the kitchen
- Luxury owner's suite and bath featuring double vanities and large walk-in closet

- Two additional bedrooms on the main level
- Tandem 3 car garage, great for storage
- Laundry room off the garage
- Front covered porch
- Lower level may be finished to include a fourth bedroom, full bath and wet bar

Ask us about additional options available!



CONTACT US TODAY!

PHONE : (937) 438-3667

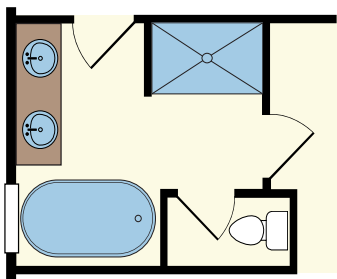
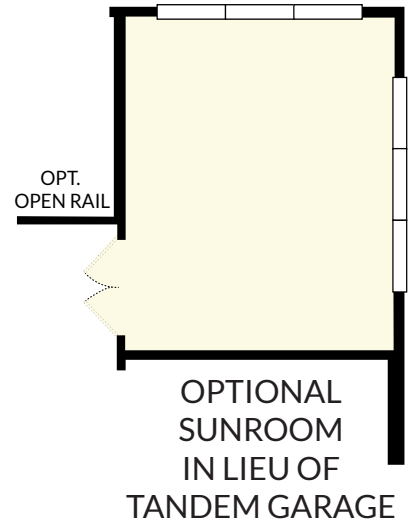
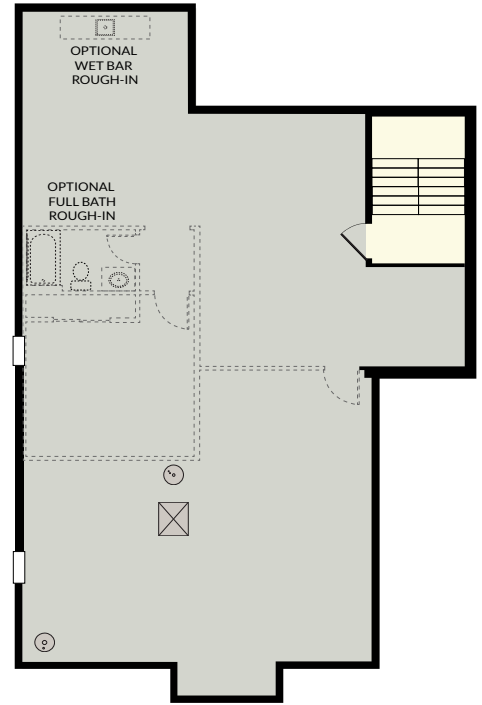
EMAIL : sales@designhomesco.com

WEB : www.designhomesco.com

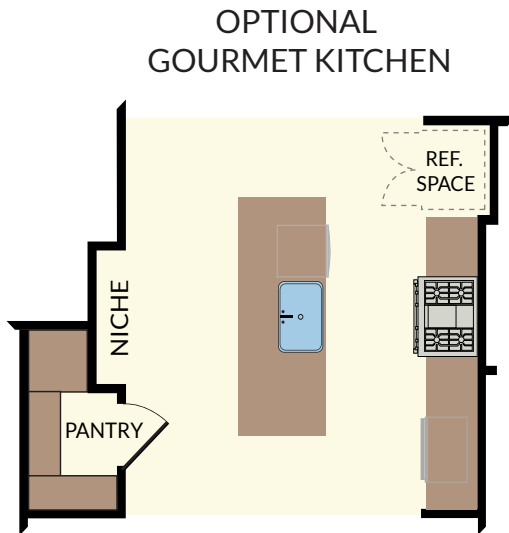
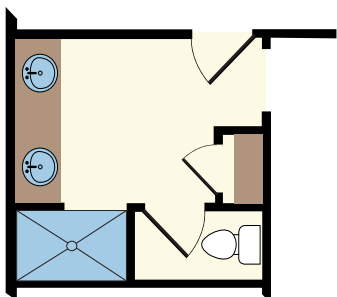


# THE CHARLOTTE

## - FLOORPLAN - Basement



OPTIONAL  
OWNER'S BATH  
LAYOUTS



OPTIONAL  
LAUNDRY  
w/ STORAGE  
CLOSET

