

THE BROOKLYN

w/ BASEMENT

DH DESIGN HOMESSM
LUXURY HOME BUILDER

3 BEDROOM | 2 BATHROOMS | 3 CAR GARAGE | 1,980 SQ.FT.



- Split floorplan ranch design
- Great room features 10' ceilings
- Kitchen w/ large island for seating
- Grand foyer with optional pan ceiling
- Luxury primary suite and bath features dual vanities, large walk-in closet and linen closet

- Two additional bedrooms on the main level
- Included 3 car garage with additional storage space
- Mud room off the garage
- Front covered porch
- Lower level may be finished to include a fourth bedroom, full bath and wet bar

Ask us about additional options available!

DH DESIGN HOMESSM
LUXURY HOME BUILDER

CONTACT US TODAY!

PHONE : (937) 438-3667

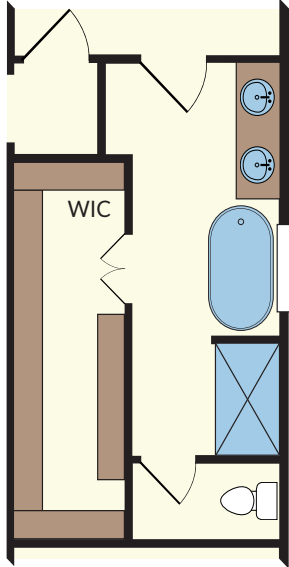
EMAIL : sales@designhomesco.com

WEB : www.designhomesco.com

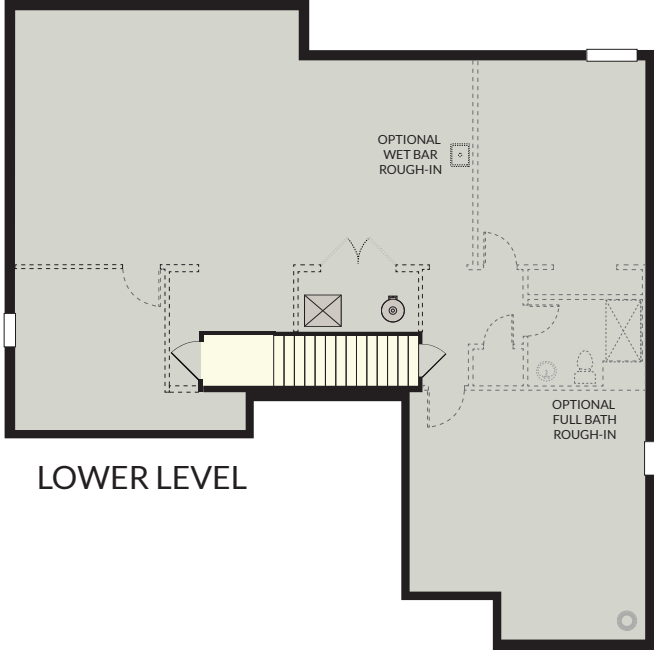
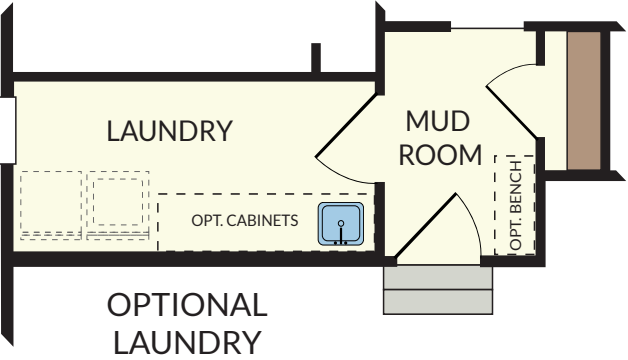


THE BROOKLYN

- FLOORPLAN - Basement



OPTIONAL
PRIMARY BATH
WITH TILED
SHOWER WALLS



The information contained herein is not guaranteed. Although obtained from reliable sources, it is subject to errors, omission, prior sale, withdrawal from the market or change in price without notice.