

THE AVA

w/ BASEMENT

DH DESIGN HOMESSM
LUXURY HOME BUILDER

2 BEDROOM | 2 BATHROOMS | 2 CAR GARAGE | 1,919 SQ.FT.



UPGRADED "B" ELEVATION SHOWN



ELEVATION A



ELEVATION B



ELEVATION C

- Open concept ranch
- Great room w/ fireplace focal point
- Kitchen w/ island for seating, walk-in pantry
- Open dining area
- Separate dining nook w/ access to covered back patio or deck

- Luxury primary suite and bath featuring double vanities and large walk-in closet
- Mud room off the garage
- Covered front entry
- Lower level may be finished to include a third bedroom, full bath and wet bar

Ask us about additional options available!

DH DESIGN HOMESSM
LUXURY HOME BUILDER

CONTACT US TODAY!

PHONE : (937) 438-3667

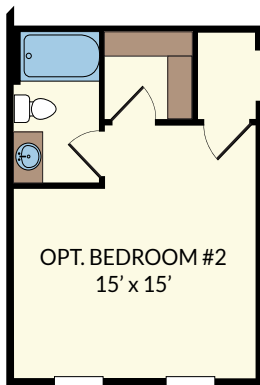
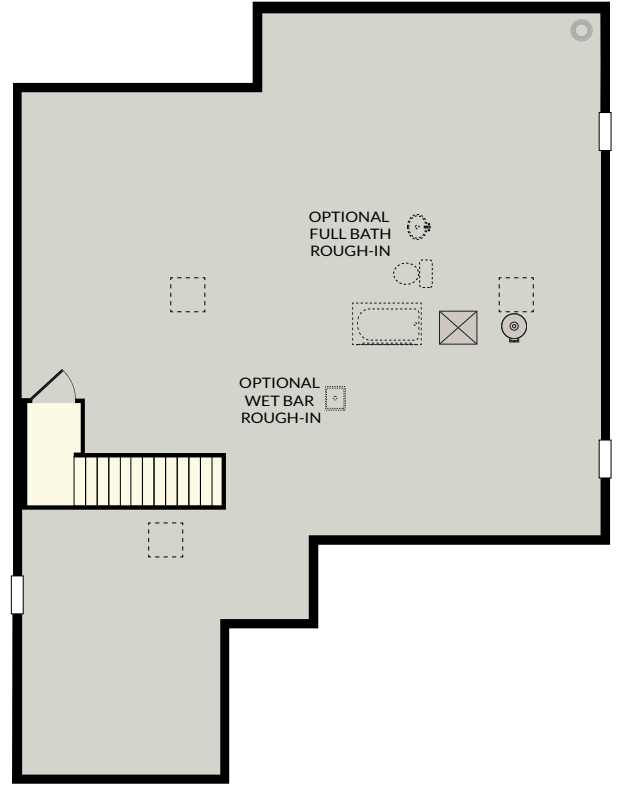
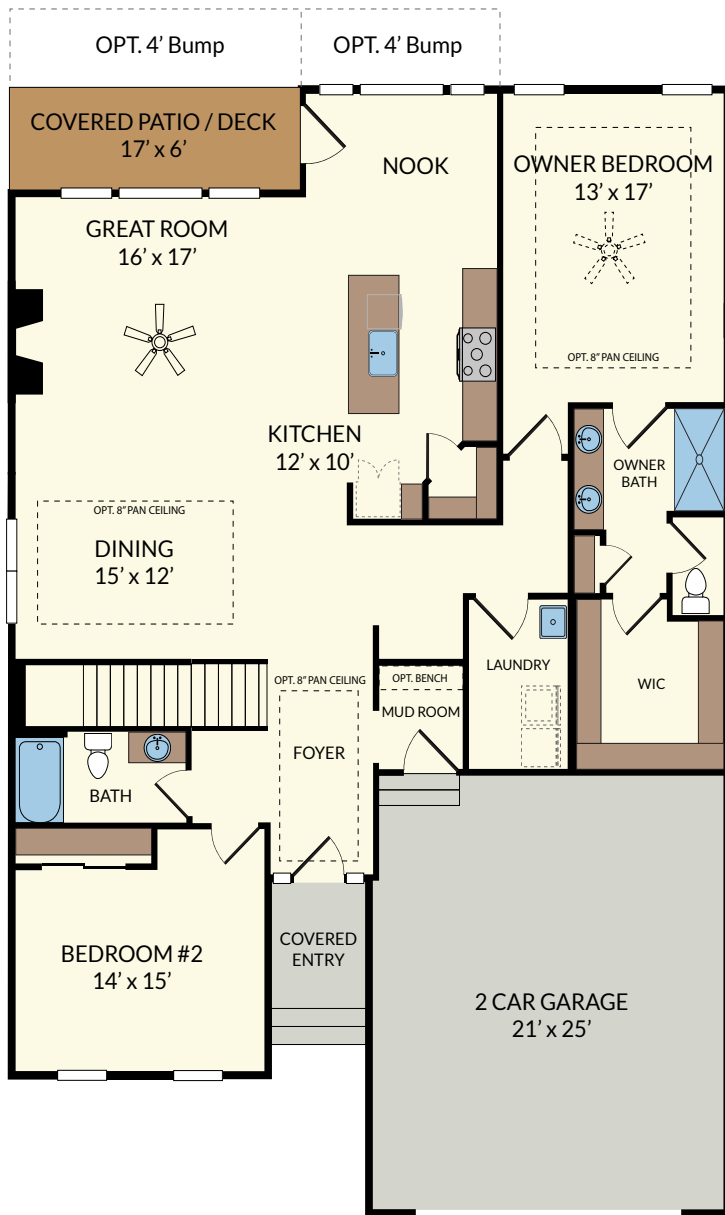
EMAIL : sales@designhomesco.com

WEB : www.designhomesco.com

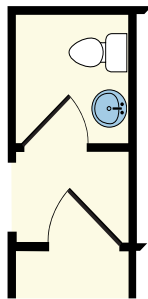


THE AVA

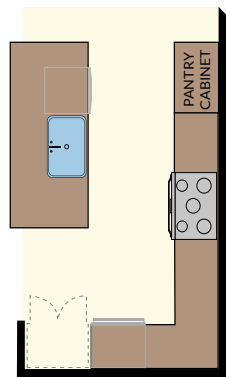
- FLOORPLAN - Basement



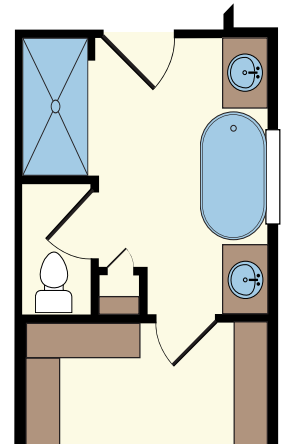
OPTIONAL
ENSUITE



OPTIONAL
POWDER ROOM
IN MUD HALL



OPTIONAL
GOURMET
KITCHEN



OPTIONAL
OWNER'S BATH
w/ FREESTANDING TUB
(REQUIRES 2' BUMP)



The information contained herein is not guaranteed. Although obtained from reliable sources, it is subject to errors, omission, prior sale, withdrawal from the market or change in price without notice.