

# THE TRIPLE CROWN



4 BEDROOM | 2.5 BATHROOMS | 2 CAR GARAGE | 2,864 SQ.FT.



UPGRADED "B" ELEVATION SHOWN



ELEVATION A



ELEVATION B



ELEVATION C

- Formal dining room off the foyer
- Study off the entry
- Two-story great room & foyer
- Kitchen with island and pantry
- Breakfast nook off kitchen
- First floor primary suite with private bathroom and large walk-in closet

- Mud hall with easy access to garage
- Spacious laundry room
- Three additional bedrooms with walk-in closets and full bathroom on second floor
- Lower level may be finished to include an additional bedroom, full bath, and wet bar

*Ask us about additional options available!*



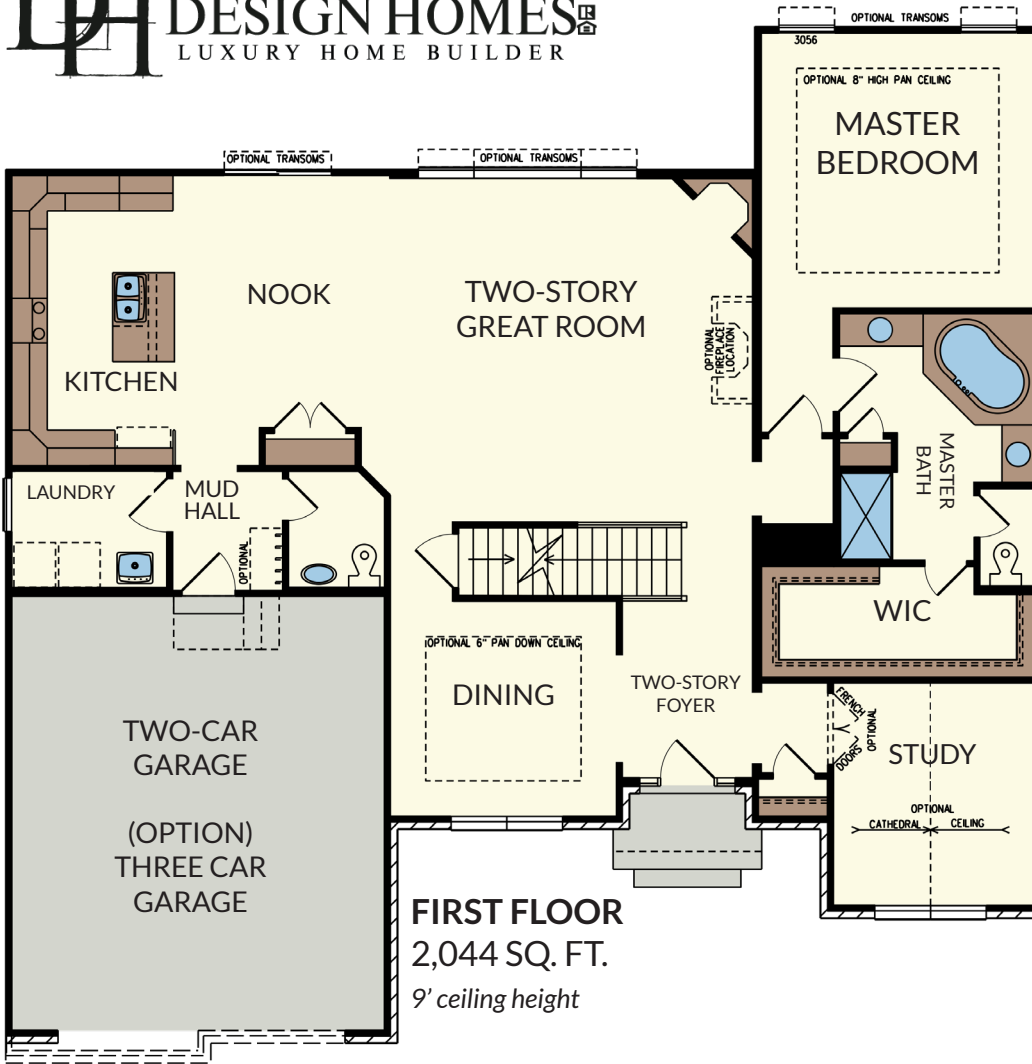
**CONTACT US TODAY!**

PHONE : (937) 438-3667

EMAIL : [sales@designhomesco.com](mailto:sales@designhomesco.com)

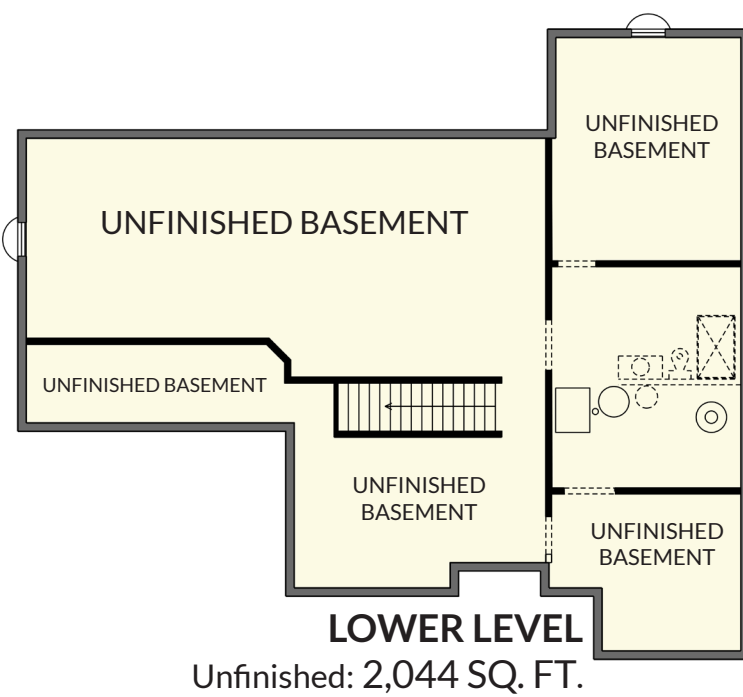
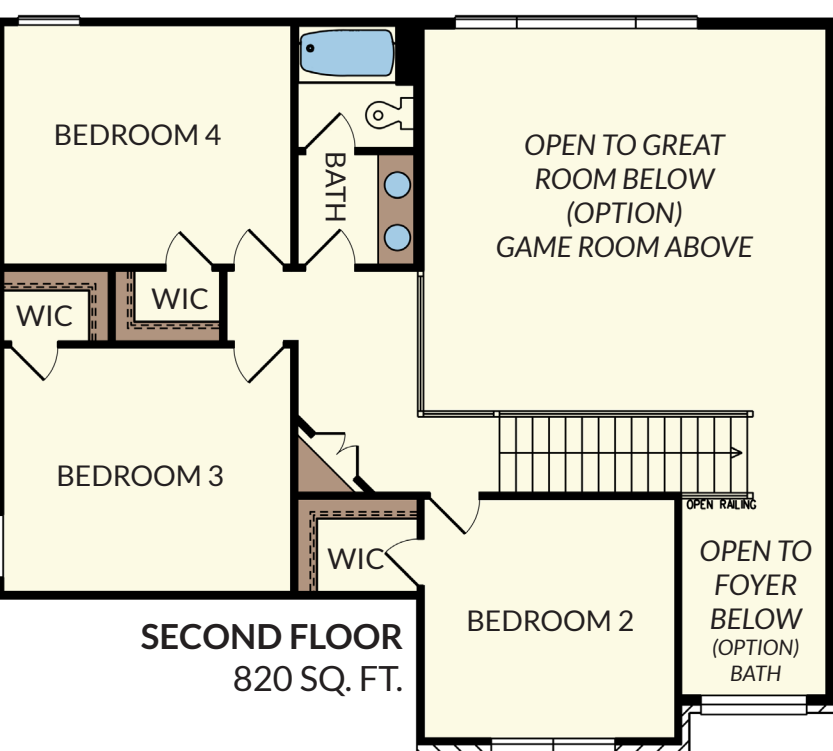
WEB : [www.designhomesco.com](http://www.designhomesco.com)



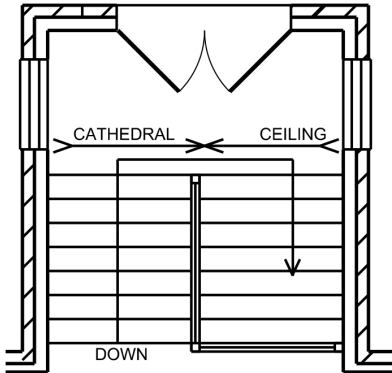


- Great Room: 20' x 19'
- Nook: 11' x 16'
- Kitchen: 10' x 16'
- Dining: 12' x 12'
- Study: 11' x 12'
- Master Bedroom: 15' x 15'
- Bedroom 2: 12' x 12'
- Bedroom 3: 14' x 12'
- Bedroom 4: 14' x 12'
- Laundry: 8' x 6'
- Mud Hall: 6' x 6'
- Two Car Garage: 21' x 24'

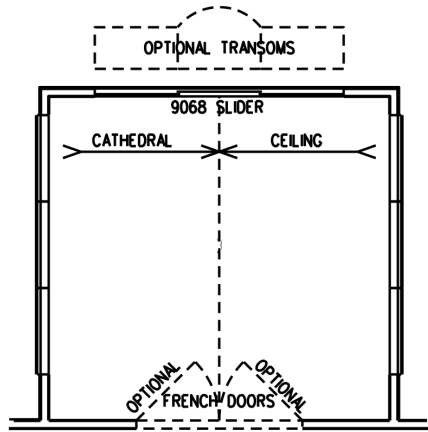
- OPTIONS AVAILABLE:**
- 2nd Floor Gameroom
  - 2nd Floor Bathroom
  - Gourmet Kitchen
  - Three Car Garage
  - Side Entry Garage
  - Sunroom (off the nook)
  - Landing Walk-Out (off the nook)



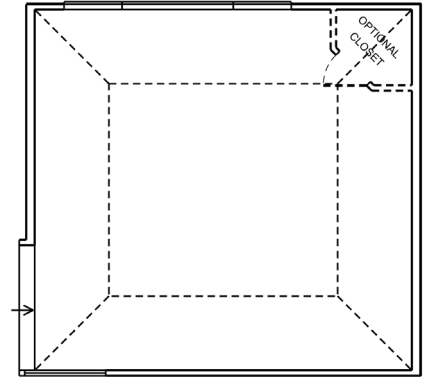
## ADDITIONAL FLOORPLAN OPTIONS



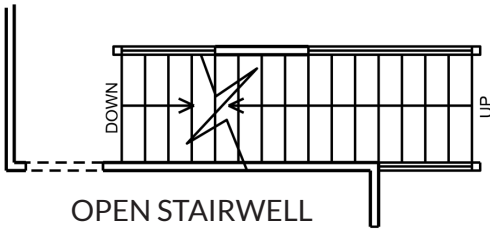
LANDING WALK-OUT  
off the nook



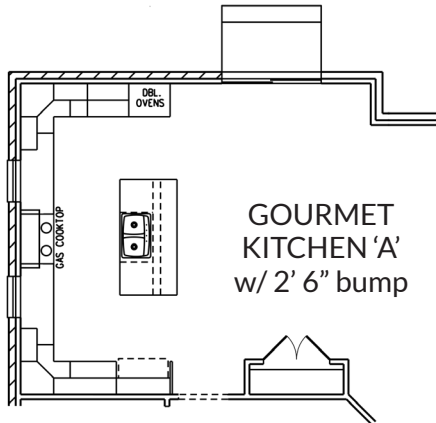
SUNROOM  
off the nook



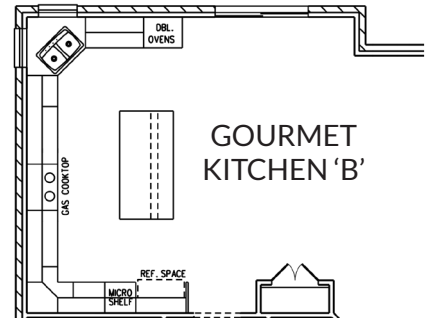
GAMEROOM  
above great room



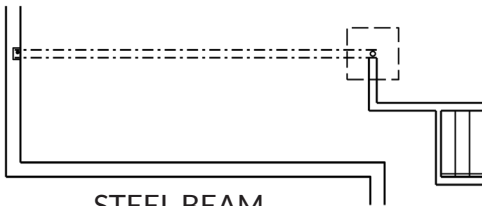
OPEN STAIRWELL



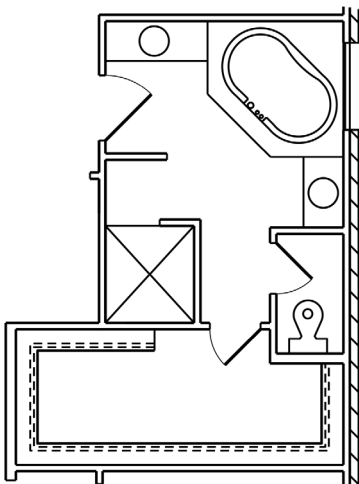
GOURMET  
KITCHEN 'A'  
w/ 2' 6" bump



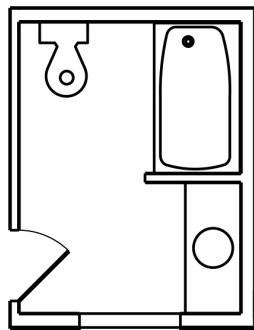
GOURMET  
KITCHEN 'B'



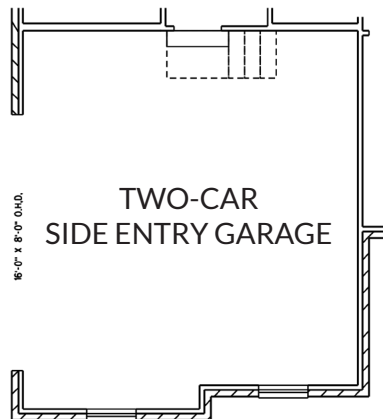
STEEL BEAM  
IN BASEMENT



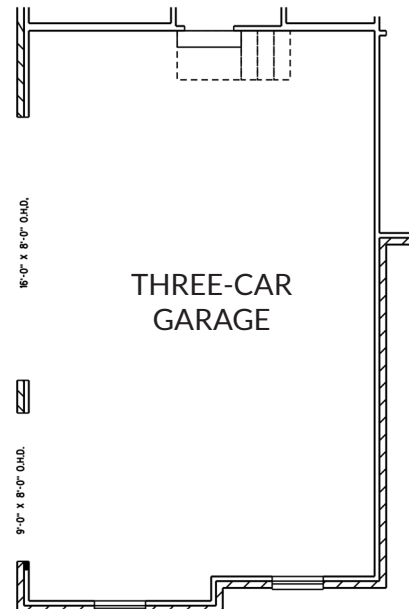
WALK-IN TILE  
SHOWER



SECOND FLOOR  
BATHROOM



TWO-CAR  
SIDE ENTRY GARAGE



THREE-CAR  
GARAGE

## FLOORPLAN OPTIONS GALLERY



LANDING WALK-OUT



2ND FLOOR GAME ROOM



SIDE ENTRY GARAGE



WALK-IN TILE SHOWER



OPEN STAIRWELL